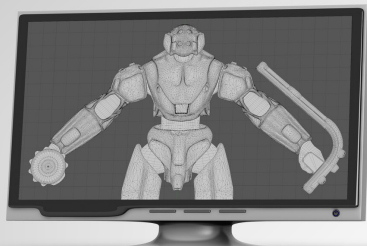
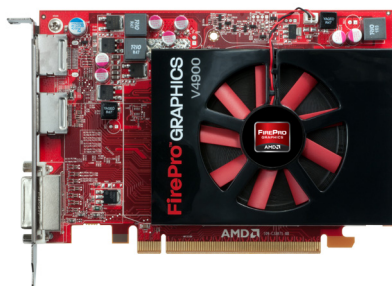


AMD**FIREPRO**

AMD FirePro™ V4900

PROFESSIONAL GRAPHICS



Strong performance and outstanding reliability for the entry level professional market.

Introducing the new AMD FirePro™ V4900 professional graphics – an entry level professional graphics solution using AMD's newest generation of graphics architecture. Offering strong performance and outstanding reliability, the AMD FirePro™ V4900 delivers features that help boost the productivity of professionals working with moderately complex models.

The AMD FirePro™ V4900 is powered by many exciting new features and technologies. Under the hood is a new generation GPU, backed by 480 stream processors capable of 0.768 Tflops of Single Precision compute power and 1GB of blazing-fast GDDR5 memory. AMD's ultra-parallel processing architecture helps maximize throughput by dynamically directing graphics horsepower where it's needed, allowing you to create at the speed of thought.

With AMD Eyefinity multi-display technology support for up to three independent and simultaneous displays from one graphics card,¹ the AMD FirePro™ V4900 will help boost your productivity without the need for confusing and expensive multi-GPU setups. The AMD FirePro™ V4900 has two DisplayPort outputs and one dual-link DVI output built in, and with the use of the included active adapter, multiple DVI powered displays are also supported out of the box. Furthermore, AMD Eyefinity multi-display technology is not limited by the display manufacturer. It is flexibly configured regardless of the brand of monitor you're using, allowing you to mix and match your display setup in the simplest of ways. With three monitors to spread your work across, you can be more productive than ever.

Why stop at three monitors? With DisplayPort 1.2, the AMD FirePro™ V4900 card can support up to a total of

six simultaneous and independent displays.⁴ The output functionalities of the AMD FirePro™ V4900 offer an unprecedented digital signage solution at a significantly lower cost of other multi-monitor setups.⁶

For users who require small form factors yet still desire high performance, the AMD FirePro™ V4900 delivers workstation quality performance that professionals have come to expect in a small and sensible half-length graphic card design. Plus, at a maximum operating power usage of less than 75W, the AMD FirePro™ V4900 maintains incredible efficiency to help you manage your power budget.

AMD FirePro™ professional graphics are thoroughly tested and certified with major Computer Aided Design (CAD) and Digital Content Creation (DCC) applications, ensuring a level of reliability not found in consumer graphics products.

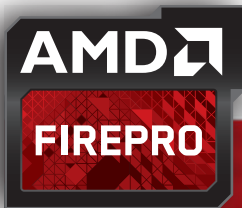
Innovation and Reliability from a Technology Leader

AMD FirePro™ professional graphics have been engineered to deliver innovation and reliability for a wide range of professional operating environments, including Windows® 7, Windows® XP, Windows Vista® and Linux®. The unified driver, which supports all AMD FirePro™ workstation graphics products, helps reduce the total cost of ownership by simplifying installation, deployment and maintenance.

In addition, AMD FirePro™ graphics products incorporate AMD's unique AutoDetect technology. As users open new 3D applications, or move between them, AMD FirePro™ graphics driver settings are automatically configured for maximum performance, no matter what the user's workflow demands.

Key Features:

- > Outstanding performance for the entry level market
- > Supports three independent displays with AMD Eyefinity multi-display technology¹
- > 1GB of high speed GDDR5 memory
- > Parallel processing architecture featuring 480 stream processors
- > Support for both dual-link DVI and DisplayPort connectivity
- > AutoDetect technology instinctively optimizes performance for multi-application workflow
- > Optimized and certified for many CAD and DCC applications
- > Full DirectX® 11 and OpenGL® support
- > PCI Express® 2.1 compliant



AMD FIREPRO™ V4900 PROFESSIONAL GRAPHICS

FEATURES	BENEFITS
AMD Eyefinity Technology	With revolutionary multi-display technology, the AMD FirePro™ V4900 supports three independent displays, delivering the most immersive graphics/computing experience with innovative display capabilities supporting massive desktop workspaces ¹
Unified Shader Architecture	Intelligent management of computation resources enables real-time rendering of complex and realistic images
AutoDetect Technology	As a user moves between applications, or opens new ones, the graphics driver settings are automatically configured for maximum performance
DisplayPort 1.2	Support for the newest DisplayPort standard adds exciting new features such as high bit-rate audio, higher data bandwidth, and multi-streaming capabilities
Full 30-bit Display Pipeline	Enables a palette of more than 1.07 billion color values for more accurate color reproduction and superior visual fidelity as compared to 24-bit products ²
Full Shader Model 5.0 Support	Helps create more complex geometry and scenes without taxing the CPU
Certification	Ensures compatibility, reliability and the highest level of performance when used with many professional 3D software packages
DirectX® 11 and OpenGL® 4.2 Advanced Features	Enables optimal performance in leading applications

PRODUCT SPECIFICATIONS	
GPU	
Stream Processors	480
Memory Interface	128-bit
Memory	
Size/Type	1GB GDDR5
Bandwidth (GB/s)	64
Display Outputs	
DisplayPort	2 standard
Dual-link DVI	1
Max Resolution per output	2560x1600
API/Feature/OS Support	
DirectX®	11.0
OpenGL®	Yes - Please see www.amd.com/api for specific version support
Shader Model	5.0
AMD Eyefinity Technology Support	Yes
Stream Computing	Yes
OS Support	Microsoft® Windows® 7, Microsoft® Windows® XP, Microsoft® Windows Vista® and Linux® ³ (32-bit or 64-bit)
Thermal/Power/Form Factor	
Max Power	<75 W
Slots	1
Form Factor	Full Height / Half Length
Bus Interface	PCI Express® 2.1 x16
Additional Details	
System Requirements	> 512MB of system memory > Available PCIe® lane > Microsoft® Windows® 7, Microsoft® Windows® XP, Microsoft® Windows Vista® or Linux® ³ (32-bit or 64-bit)
Retail Package Contents	> AMD FirePro™ V4900 Professional Graphics > Quick Installation Guide > One DisplayPort to DVI (single link passive) adapter
Warranty and Support	> Three year limited product repair / replacement warranty > Direct toll free phone and email access to dedicated workstation technical support team ⁵ > Advanced parts replacement option
Regulatory Compliance	FCC, CE, C-Tick, BSMI, MIC, UL, VCCI, RoHS and WEEE

¹ AMD Eyefinity technology can support multiple displays using a single enabled AMD FirePro™ professional graphics card; the number of supported displays varies by card model. Microsoft® Windows® 7, Windows Vista®, or Linux® is required in order to support more than 2 displays. Depending on the card model, native DisplayPort™ connectors and/or certified DisplayPort™ active or passive adapters to convert your monitor's native input to your card's DisplayPort™ or Mini-DisplayPort™ connector(s) may be required. See www.amd.com/firepro for details.

² 30-bit monitor required for full 30-bit display.

³ Linux® drivers can be downloaded from support.amd.com.

⁴ Require the use of either DP 1.2 hub or DP 1.2 capable monitors

⁵ Toll-free phone service available in U.S. and Canada only, email access is global.

⁶ Output to three independent monitors requires one AMD FirePro V4900 card at \$199 or two nVIDIA Quadro 600 cards in Mosaic Mode at a combined suggested retail price of \$398. Pricing as of 9/12/2011.



**For more information,
visit www.amd.com/firepro**

For more information, visit www.amd.com/firepro

© 2011 Advanced Micro Devices, Inc. All rights reserved. AMD, the AMD logo, FirePro, and combinations thereof are trademarks of Advanced Micro Devices, Inc. Microsoft, Windows, Windows Vista and DirectX are registered trademarks of Microsoft Corporation in the United States and/or other jurisdictions. OpenGL is a trademark of Apple Inc., and is used with permission from Khronos. Other names are for informational purposes only and may be trademarks and/or registered trademarks of their respective owners. PID50612A

